



# MARCH PUMPS

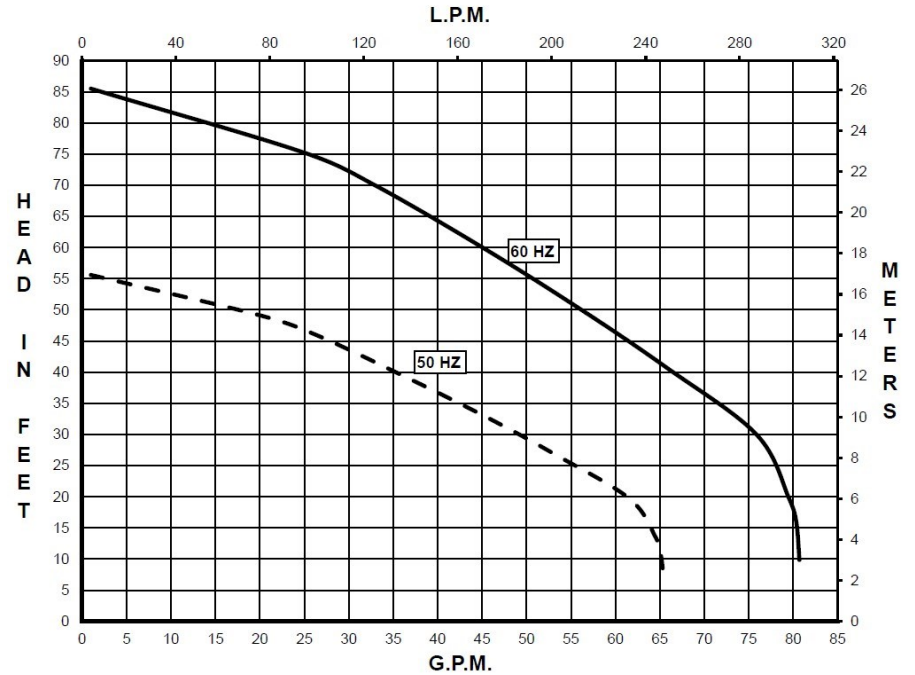
1819 PICKWICK AVE., GLENVIEW, IL 60026-1306, U.S.A  
 PHONE: (847) 729-5300 - FAX: (847) 729-7062  
 WWW.MARCHPUMP.COM

**DESCRIPTION & OPERATION:** The **SP-TE-8P-MD** is a centrifugal magnetic drive pump eliminating the need for a shaft seal. The pump can be serviced with an adjustable wrench. See the parts list for a breakdown of parts. The housing container should be filled completely with liquid. The container holds approximately 1-3/4 gallons. After the container is full and the filler cap has been screwed tight, check all the connections for any leakage. Start the motor and continue to check for any leakage. The pump has the ability to vertically pullup liquid 8 feet from the surface of the supply tank to the pump within one minute. The maximum suction lift is 16 feet. If the unit does not self-prime, then check for leakage or for obstructions. Pumps **cannot be run dry** because the impeller requires the liquid being pumped for lubrication. The direction of the motor rotation should be counterclockwise when facing the motor end of the pump. A trimmed impeller may be necessary when pumping a liquid with a specific gravity or viscosity greater than water as well in cases of high liquid temperature. For application assistance, contact March Pump.

**ELECTRICAL:** 1 phase 230 Volt 60 Hz or 3 phase 230/460 Volt, 60 Hz, 380 Volt, 50 Hz. Motors are totally enclosed fan cooled and are U.L. listed as well as rated for continuous operation. All motors have a conduit box for electrical connections.

**DISASSEMBLY & REASSEMBLY:** Drain all the liquid from the unit and flush with water. Examine the exploded view of the pump construction before starting to disassemble to become familiar with the unit. Remove the 12 screws on the pump container and remove the container from the rear housing. The front housing can now be pulled forward and removed. The impeller will slide off the shaft. Clean all the parts as necessary and replace any worn or damaged parts. Reassemble as shown in the exploded view. Make sure the "O" rings and thrust washer are in the proper position.

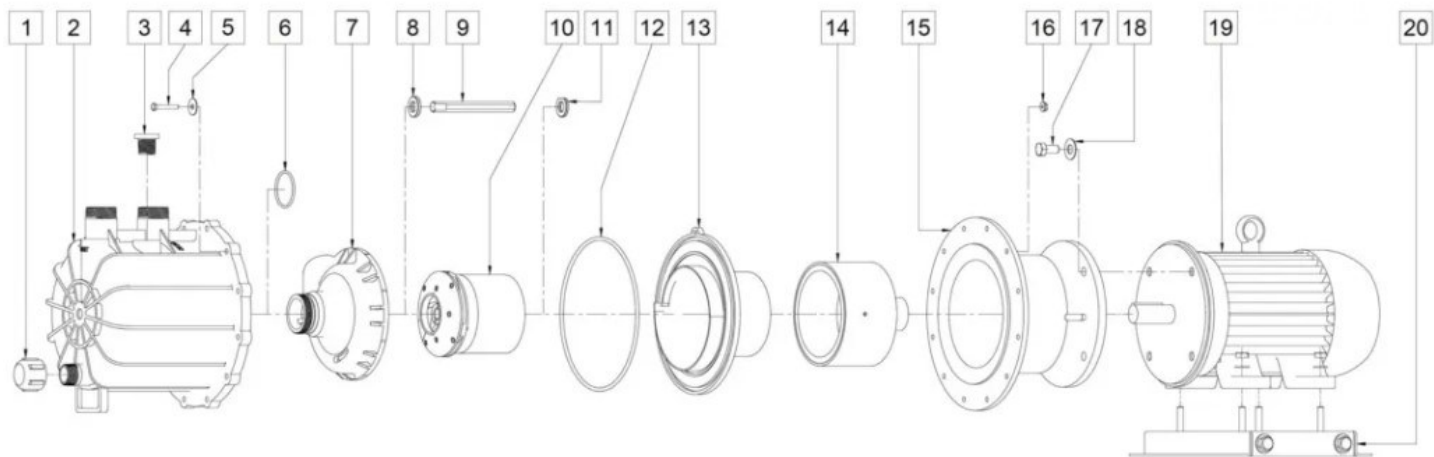
## SP-TE-8P-MD



Specifications		SP-TE-8P-MD
Product	1Ph	0157-0221-0100
	3Ph	0157-0200-0200
Inlet-Outlet		1-1/2" MPT-1-1/2" MPT
Max Internal Pressure		70PSI (482kPa)
Max Liquid Temperature		180F (82C)

Model	60Hz												50Hz												Packed Weight
	Max Flow		Max Head			Electrical							Max Flow		Max Head			Electrical							
	GPM	LPM	FT	PSI	M	Ph	V	A	HP	kW	RPM	GPM	LPM	Feet	PSI	M	Ph	V	A	HP	kW	RPM	Pounds		
SP-TE-8P-MD	80	363	86	37.2	26.2	1	230	20.5	5	3.72	3450												168		
SP-TE-8P-MD	80	363	86	37.2	26.2	3	230/460	11.8/5.9	5	3.72	3450	65	246	56	24.2	17	3	380	7.14	5	3.72	2850	171		

All specifications & data are based on pumping water & are intended as a guideline only. Specifications may vary with different motors.



**NOTE:** When attaching drive magnet to the motor shaft, position the face of the drive magnet 3/8inch below the face of the motor bracket.

**SP-TE-8P-MD**

Item	Part Number	QTY REQ	Description	Item	Part Number	QTY REQ	Description
1	0155-0182-1000	1	Drain Cap (Polypropylene)	12	0157-0207-1000	1	O-Ring (-373) .210"CS x 8.975"ID x 9.395"OD (Viton)
2	0157-0215-1000	1	Housing Container (Polypropylene)	13	0157-0203-1000	1	Rear Housing (Polypropylene)
3	0157-0218-1000	1	Fill Plug (Teflon)	14	0157-0005-0100	1	Drive Magnet
4	0153-0011-1000	12	Screw (Cap) Hex Hd 1/4-20 x 1-1/2"Lg (Stainless)	15	0157-0204-1000	1	Motor Bracket (Cast Iron)
5	0157-0216-1000	12	Washer 1/4" x 1" (Stainless)	16	0156-0053-1000	12	Lock Nut 1/4-20 (Stainless)
6	0157-0206-1000	1	O-Ring (-226) .139"CS x 1.984"ID x 2.262"OD (Viton)	17	0160-0031-1000	4	Screw (Cap) Hex Hd 1/2-13 x 1"Lg (Stainless)
7	0157-0201-1000	1	Front Housing (Polypropylene)	18	0160-0032-1000	4	Washer (Flat) 1/2 (Stainless)
8	0157-0001-1000	1	Front Thrust Washer (Ceramic)	19A	0157-0065-1000	1	Motor, TEFC, 3 Phase, 230/460V, 50/60 Hz 5HP
9	0157-0099-1000	1	3 Flats Shaft (Ceramic)	19B	0157-0169-1000	1	Motor, TEFC, 1 Phase, 230 60 Hz, 5 HP
10	0157-0004-0500	1	Impeller with Carbon Bushing (Polypropylene and Carbon)	20	0157-0208-1000	1	Base
11	0157-0009-1000	1	Rear Thrust Washer (Ceramic)				

NOTE: Contact Factory for other materials and/or parts not listed.  
Special voltage motors are available upon special order.

Materials in contact with the liquid:  
**SP-TE-8P-MD:** Polypropylene, Carbon, Ceramic, Viton

**LIMITED WARRANTY:** March pumps are guaranteed only against defects in workmanship or materials for a period of one year from date of manufacture pumping water. For the complete warranty and to register online go to [www.marchpump.com/warranty-registration](http://www.marchpump.com/warranty-registration)