



MARCH PUMPS

1819 PICKWICK AVE., GLENVIEW, IL 60026-1306, U.S.A
 PHONE: (847) 729-5300 - FAX: (847) 729-7062
 WWW.MARCHPUMP.COM

DESCRIPTION:

Series 2 are centrifugal magnetic drive pumps, eliminating the need for a shaft seal. The "LC" model is hermetically encapsulated for complete moisture protection. Model 2CP-MD must be run submerged only. See the parts list for a breakdown of parts.

OPERATION:

Pumps are not self-priming, lack a suction lift, and thus require a **flooded suction**. Pumps **cannot be run dry** because the impeller requires the liquid being pumped for lubrication. For liquids with a specific gravity greater than water, have a higher viscosity, or for elevated temperatures, a trimmed impeller may be necessary. For application assistance, contact March Pump.

ELECTRICAL:

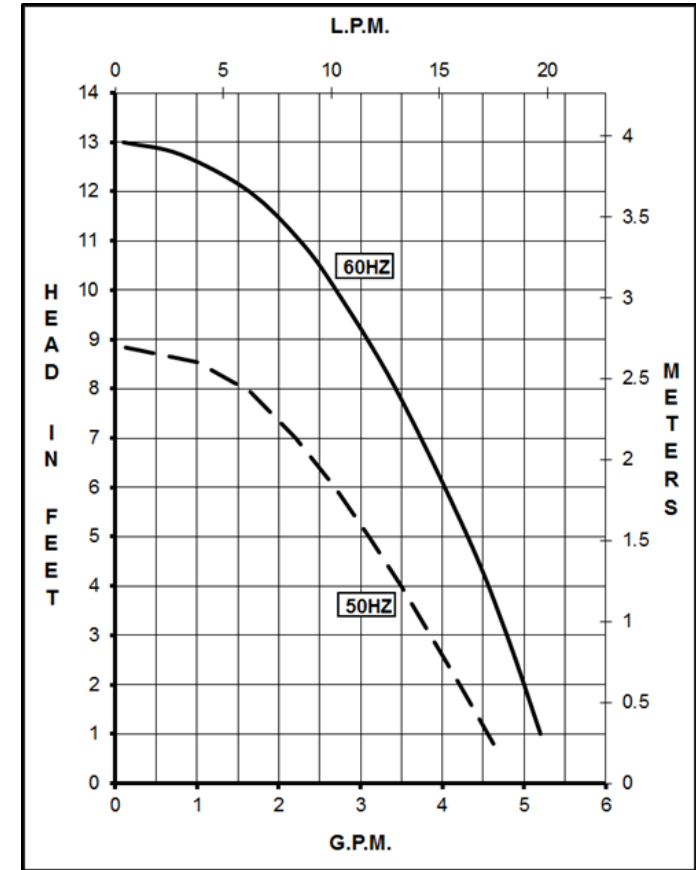
Motors are available in different electrical configurations such as 115V 50/60HZ or 230V 50/60HZ 1 phase.

The motors are U.L. listed and rated for continuous duty.

Model 2CP-MD 115 V has a 6 ft (1.8 m) cord with plug, 230 V has a 6 ft (1.8 m) cord.

Models LC-2CP-MD 115 V & 230 V have a 6 ft (1.8 m) cord.

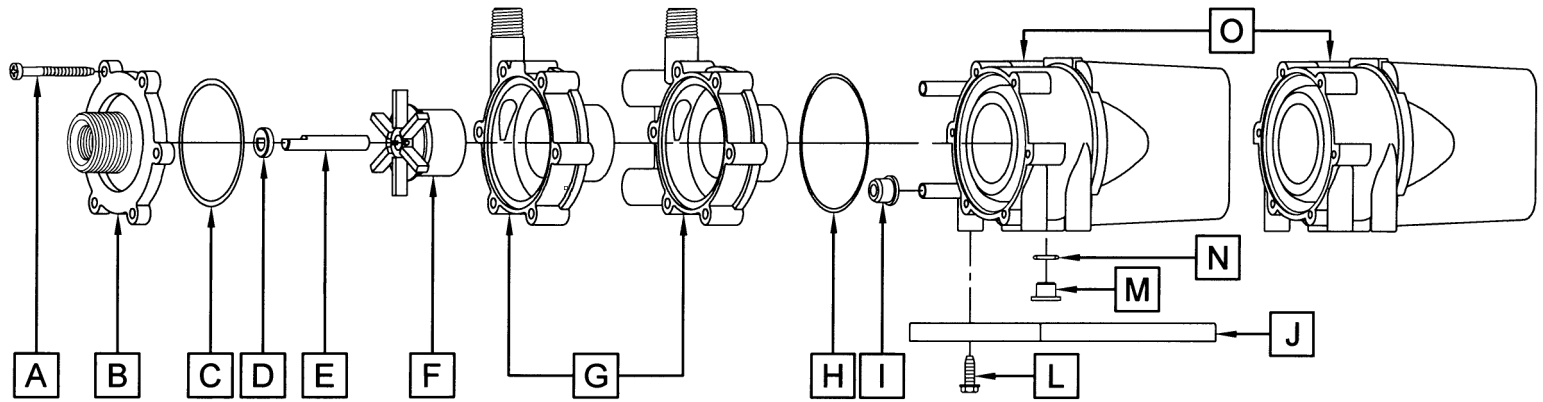
2CP-MD, LC-2CP-MD



Specifications		2CP-MD	LC-2CP-MD
Product	115V	0125-0058-0100	0125-0057-0200
	230V	0125-0058-0200	0125-00527-0300
Inlet-Outlet		3/8" FPT & 3/4" MPT-1/4" MPT	3/8" FPT & 3/4" MPT-1/4" MPT
Max Internal Pressure		50 psi (344 kPa)	25 psi (172kPa)
Max Liquid Temperature		130F (54C)	130F (54C)

Model	60Hz												50Hz												Packed Weight Pounds
	Max Flow		Max Head			Electrical							Max Flow		Max Head			Electrical							
	GPM	LPM	FT	PSI	M	Ph	V	A	HP	kW	RPM	GPM	LPM	Feet	PSI	M	Ph	V	A	HP	kW	RPM			
2CP-MD	5	18.9	13	5.7	4	1	115/230	0.92/0.53	1/50 & 1/40	0.015/0.019	3450	4.89	18.5	8.8	3.8	2.7	1	115/230	1.1/0.72	1/55	0.014	2850	2.29		
LC-2CP-MD	5	18.9	13	5.7	4	1	115/230	0.92/0.53	1/50 & 1/40	0.015/0.019	3450	4.89	18.5	8.8	3.8	2.7	1	115/230	1.1/0.72	1/55	0.014	2850	2.35		

All specifications & data are based on pumping water & are intended as a guideline only. Specifications may vary with different motors.



NOTE: When attaching the Drive Magnet to the motor shaft, position the face of the Drive Magnet 1/16 inch below the face of the Motor Bracket.

2CP-MD				LC-2CP-MD			
Item	Part Number	QTY REQ	Description	Item	Part Number	QTY REQ	Description
A	0115-0062-1000	6	#10-32 x 1" Long Screw (Stainless)	A	0115-0062-1000	6	#10-32 x 1" Long Screw (Stainless)
B	0125-0056-1000	1	Cover with 3/8" FPT x 3/4" MPT Inlet (Polypropylene)	B	0125-0056-1000	1	Cover with 3/8" FPT x 3/4" MPT Inlet (Polypropylene)
C	0125-0065-1000	1	3/32" CS x 2-3/16" OD "O" Ring (Viton)	C	0125-0065-1000	1	3/32" CS x 2-3/16" OD "O" Ring (Viton)
D	0130-0028-1000	1	Thrust Washer (Ceramic)	D	0130-0028-1000	1	Thrust Washer (Ceramic)
E	0125-0125-1000	1	Shaft (Stainless)	E	0125-0125-1000	1	Shaft (Stainless)
F	0125-0055-0100	1	Impeller with Bare Ceramic Magnet (Polypropylene)	F	0125-0055-0100	1	Impeller with Bare Ceramic Magnet (Polypropylene)
G	0125-0058-1000	1	Rear Housing with 1/4" MPT Outlet (Polypropylene)	G	0125-0057-0100	1	Rear Housing & Plug with 1/4" MPT Outlet (Polypropylene)
H	0125-0134-1000	1	2MM CS x 57MM ID Bracket "O" Ring (Buna N)	H	0125-0121-1000	1	1/16" CS x 2-3/8" OD Bracket "O" Ring (Viton)
				I	0125-0007-1000	2	Cooling Tube Seal (Buna N)
J	0125-0060-1000	1	Mounting Base (Polypropylene)	J	0125-0060-1000	1	Mounting Base (Polypropylene)
L	0125-0130-1000	4	Base Screw (Stainless)	L	0125-0130-1000	4	Base Screw (Stainless)
M	0125-0110-1000	1	Motor Bracket Plug	M	0125-0110-1000	1	Motor Bracket Plug
N	0210-0008-1000	1	1/16" CS x 7/16" OD "O" Ring (Viton)	N	0210-0008-1000	1	1/16" CS x 7/16" OD "O" Ring (Viton)
O	N/A	1	Epoxy Motor Assembly	O	N/A	1	Epoxy Motor Assembly
				W	0125-0115-0200	1	Wet End Kit (A,B,C,D, E,F,G,H,I)

Materials in contact with the solution : Polypropylene, Ceramic, Viton, Stainless Steel, Ceramic Magnet. When submerged, also: Epoxy, Buna N, Cord

LIMITED WARRANTY: March pumps are guaranteed only against defects in workmanship or materials for a period of one year from date of manufacture pumping water. For the complete warranty and to register online go to www.marchpump.com/warranty-registration

NOTE: Contact Factory for other materials and/or parts not listed.

Special voltage motors are available upon special order.